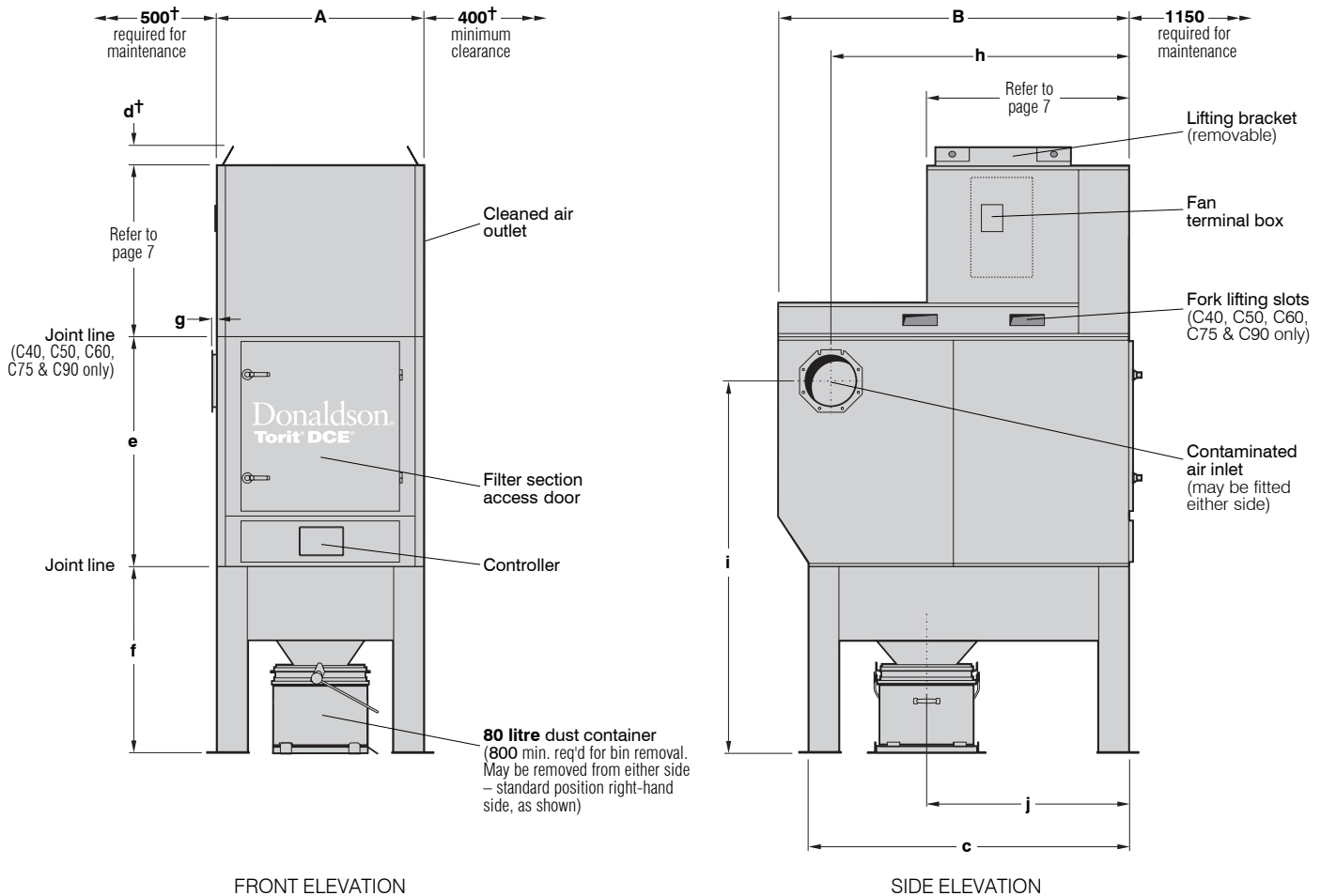


# Unicell Dust Collectors

## Series C10-90



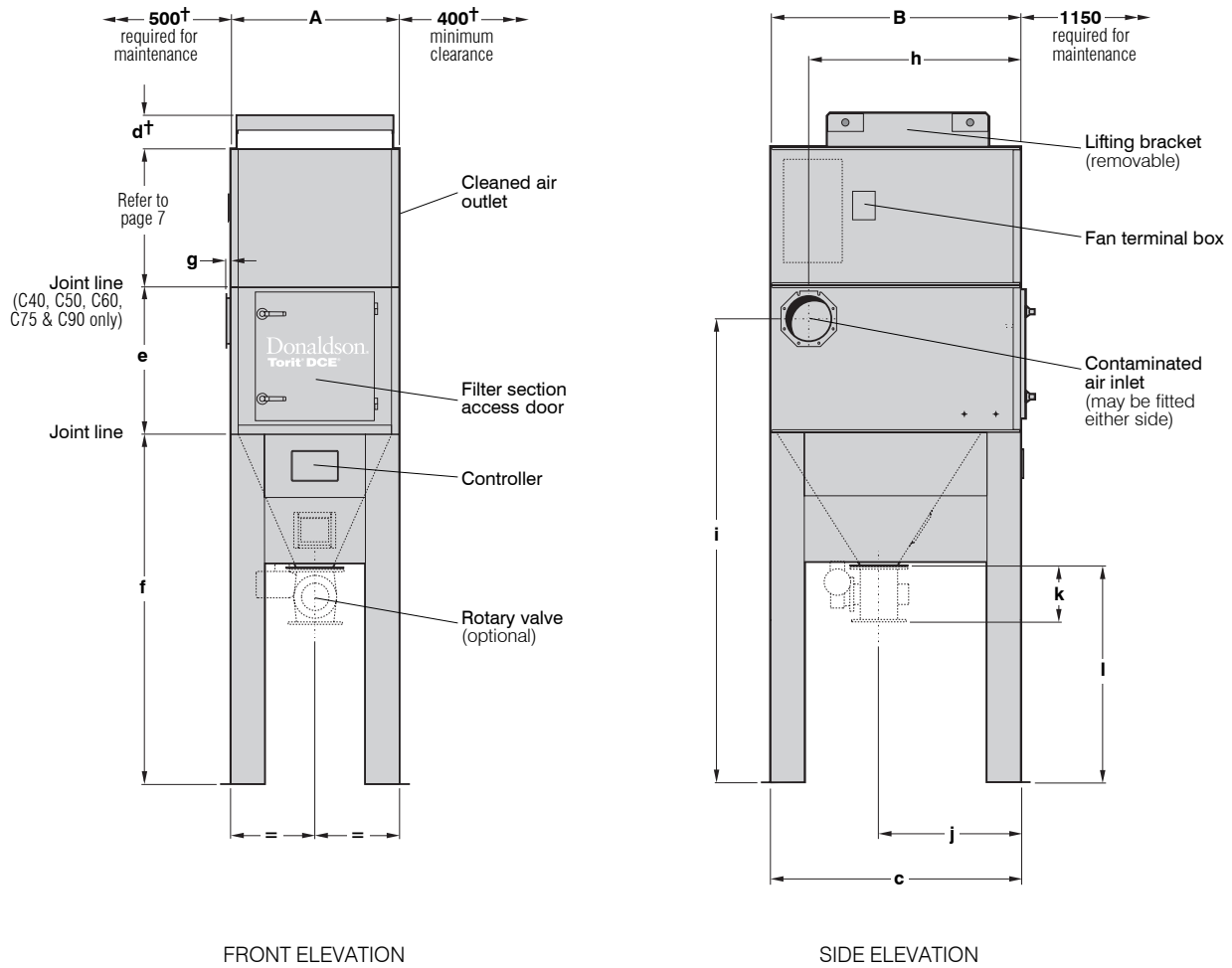
### UNICELL DUST COLLECTOR WITH DUST CONTAINER

(C50-3 K10 illustrated)

#### SPECIFICATIONS

Type	Filtration area	DIMENSIONS in mm									
		A	B	c	d	e	f	g	h	i	j
<b>C10-3</b>	10m <sup>2</sup>	928	1380	1380	185	814	1040	12	1170	1667	785
<b>C20-3</b>	20m <sup>2</sup>	928	1380	1380	185	814	1040	12	1170	1667	785
<b>C30-3</b>	30m <sup>2</sup>	1280	1380	1380	185	814	1040	12	1170	1667	785
<b>C40-3</b>	40m <sup>2</sup>	1240	2100	1920	120	1475	1100	2	1780	2288	1210
<b>C50-3</b>	50m <sup>2</sup>	1240	2100	1920	120	1475	1100	2	1780	2288	1210
<b>C60-3</b>	60m <sup>2</sup>	1240	2100	1920	120	1475	1100	2	1780	2288	1210
<b>C75-3</b>	75m <sup>2</sup>	1240	2100	1920	120	2000	1100	2	1780	2765	1210
<b>C90-3</b>	90m <sup>2</sup>	1240	2100	1920	120	2000	1100	2	1780	2765	1210

Refer to page 9 for fan availability † Refer also to page 19 for clearances required for fan removal

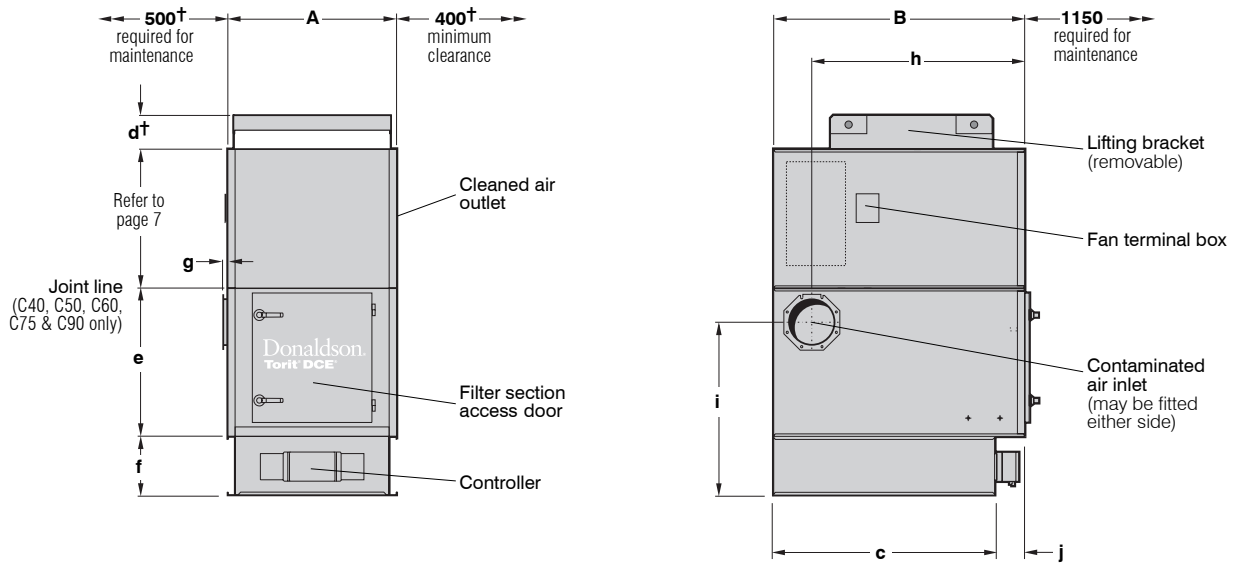


**UNICELL DUST COLLECTOR WITH ROTARY VALVE**

(C20 R K3 illustrated)

<b>SPECIFICATIONS</b>													
Type	Filtration area	DIMENSIONS in mm											
		A	B	c	d	e	f	g	h	i	j	k	l
<b>C10 R</b>	10m <sup>2</sup>	928	1380	1380	185	814	1924	12	1170	2551	785	325	1200
<b>C20 R</b>	20m <sup>2</sup>	928	1380	1380	185	814	1924	12	1170	2551	785	325	1200
<b>C30 R</b>	30m <sup>2</sup>	1280	1380	1380	185	814	1924	12	1170	2551	785	325	1200
<b>C40 R</b>	40m <sup>2</sup>	1240	2100	1920*	120	1475	2182	2	1780	3370	1210	380	1206
<b>C50 R</b>	50m <sup>2</sup>	1240	2100	1920*	120	1475	2182	2	1780	3370	1210	380	1206
<b>C60 R</b>	60m <sup>2</sup>	1240	2100	1920*	120	1475	2182	2	1780	3370	1210	380	1206
<b>C75 R</b>	75m <sup>2</sup>	1240	2100	1920*	120	2000	2182	2	1780	3847	1210	380	1206
<b>C90 R</b>	90m <sup>2</sup>	1240	2100	1920*	120	2000	2182	2	1780	3847	1210	380	1206

Refer to page 9 for fan availability † Refer also to page 19 for clearances required for fan removal  
\*Measurement from front of collector



FRONT ELEVATION

SIDE ELEVATION

**UNICELL HOPPER TYPE DUST COLLECTOR**

(C20 H K3 illustrated)

SPECIFICATIONS											
Type	Filtration area	DIMENSIONS in mm									
		A	B	c	d	e	f	g	h	i	j
<b>C10 H</b>	10m <sup>2</sup>	928	1380	1215	185	814	325	12	1170	952	165
<b>C20 H</b>	20m <sup>2</sup>	928	1380	1215	185	814	325	12	1170	952	165
<b>C30 H</b>	30m <sup>2</sup>	1280	1380	1215	185	814	325	12	1170	952	165
<b>C40 H</b>	40m <sup>2</sup>	1240	2100	1920*	120	1475	0	2	1780	1188	0
<b>C50 H</b>	50m <sup>2</sup>	1240	2100	1920*	120	1475	0	2	1780	1188	0
<b>C60 H</b>	60m <sup>2</sup>	1240	2100	1920*	120	1475	0	2	1780	1188	0
<b>C75 H</b>	75m <sup>2</sup>	1240	2100	1920*	120	2000	0	2	1780	1665	0
<b>C90 H</b>	90m <sup>2</sup>	1240	2100	1920*	120	2000	0	2	1780	1665	0

Refer to page 9 for fan availability † Refer also to page 19 for clearances required for fan removal  
\*Measurement from front of collector

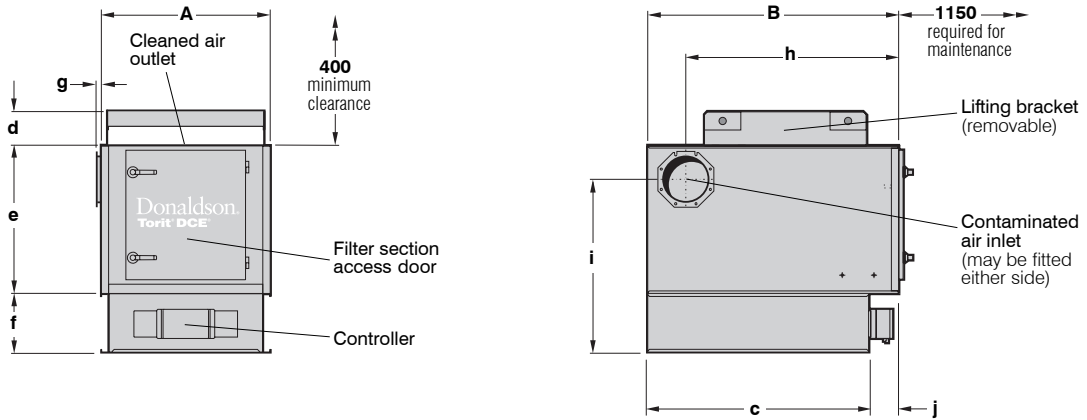
**DESIGN LIMITS (standard equipment)**

**Temperature range:** -10° to +60°C

**Pressure limits:** Collector with fan: as fan performance curves from shut-off to operating pressure  
Collector without fan: -500mm W.G. (For positive pressures refer to Donaldson)

**Dimension tolerances:** ±5mm on main dimensions; ±2mm on detail dimensions

Equipment is available suitable for use in a potentially explosive atmosphere (Directive 94/9/EC) satisfying the requirements for group II category 2G or 2D and 3G or 3D T135°C



FRONT ELEVATION

SIDE ELEVATION

**UNICELL VENTING TYPE DUST COLLECTOR**

(C20 V illustrated)

**SPECIFICATIONS**

Type	Filtration area	DIMENSIONS in mm									
		A	B	c	d	e	f	g	h	i	j
<b>C10 V</b>	10m <sup>2</sup>	928	1380	1215	185	814	325	12	1170	952	165
<b>C20 V</b>	20m <sup>2</sup>	928	1380	1215	185	814	325	12	1170	952	165
<b>C30 V</b>	30m <sup>2</sup>	1280	1380	1215	185	814	325	12	1170	952	165
<b>C40 V</b>	40m <sup>2</sup>	1240	2100	1920*	120	1675	0	2	1780	1188	0
<b>C50 V</b>	50m <sup>2</sup>	1240	2100	1920*	120	1675	0	2	1780	1188	0
<b>C60 V</b>	60m <sup>2</sup>	1240	2100	1920*	120	1675	0	2	1780	1188	0
<b>C75 V</b>	75m <sup>2</sup>	1240	2100	1920*	120	2200	0	2	1780	1665	0
<b>C90 V</b>	90m <sup>2</sup>	1240	2100	1920*	120	2200	0	2	1780	1665	0

\*Measurement from front of collector

**ELECTRICAL REQUIREMENTS**

**C10:** 2-way controller

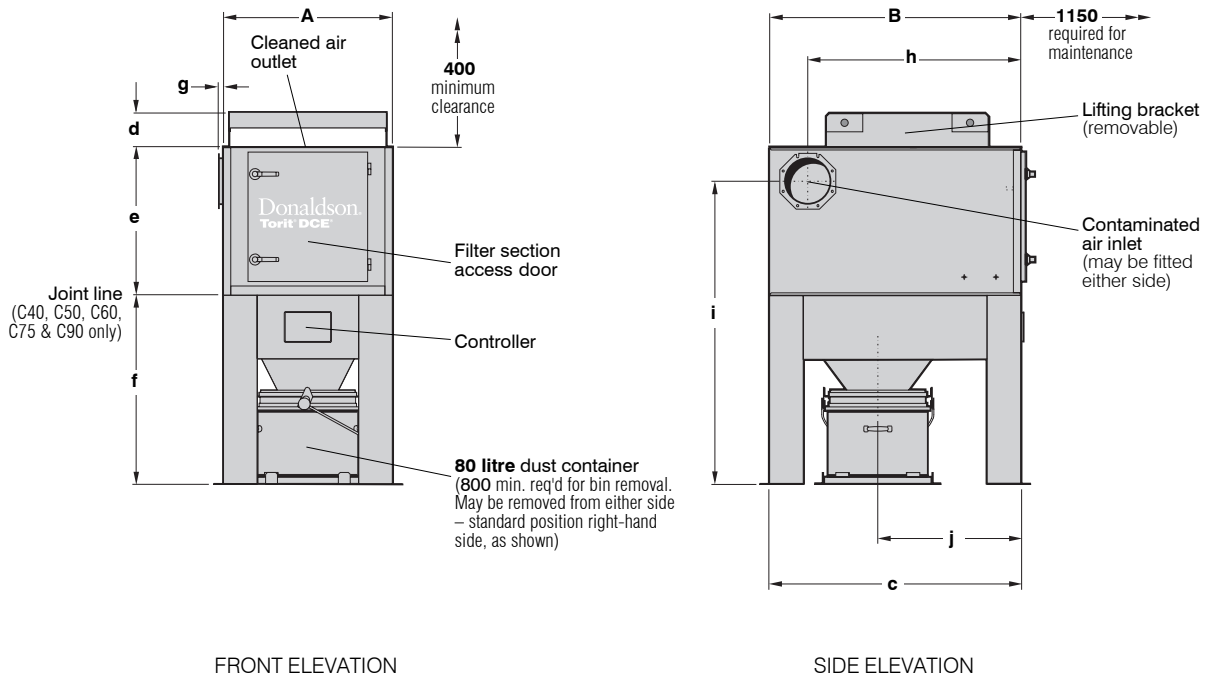
**C20 and C40:** 4-way controller

**C50 and C75:** 5-way controller

**C30, C60 and C90:** 6-way controller

**Controller voltage input:** AC version: 105-120V, 200-240V ± 10% DC version: 24V

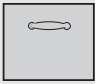
**Fan motor:** To suit local voltage



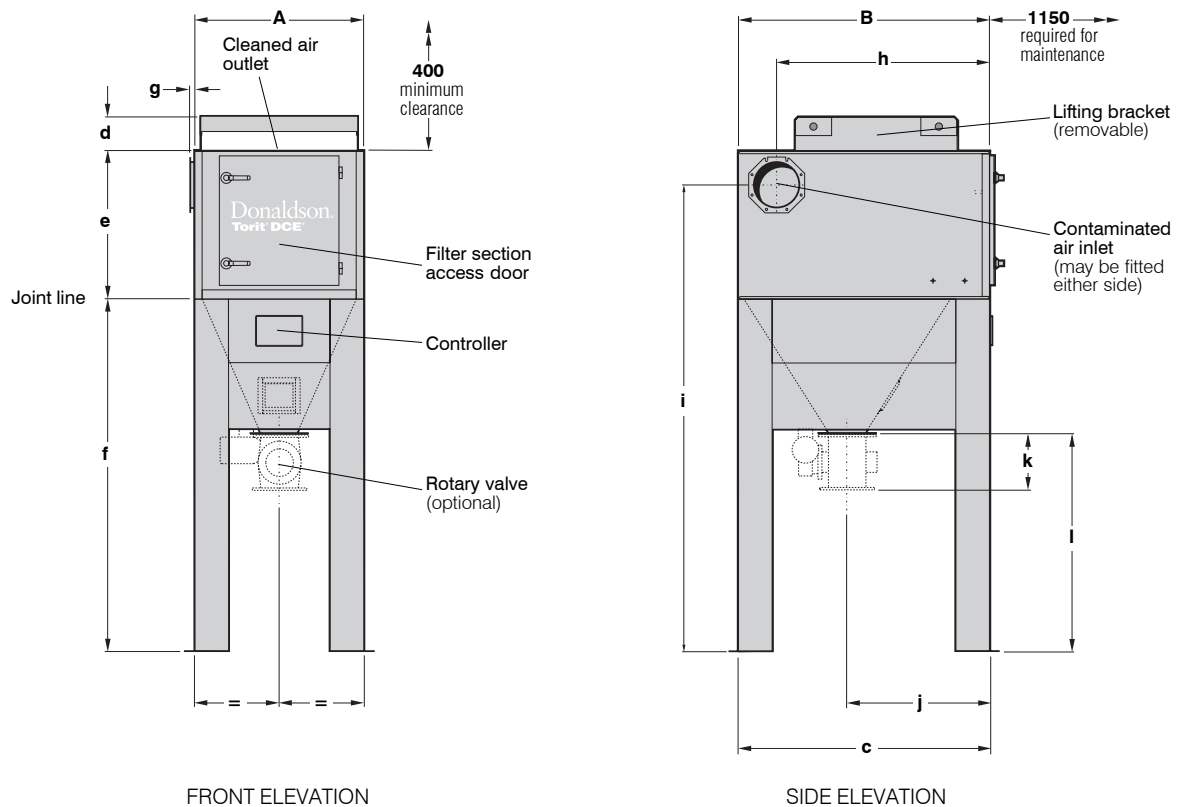
**UNICELL VENTING TYPE DUST COLLECTOR WITH DUST CONTAINER**  
(C20-3 V illustrated)

<b>SPECIFICATIONS</b>											
Type	Filtration area	DIMENSIONS in mm									
		A	B	c	d	e	f	g	h	i	j
<b>C10-3 V</b>	10m <sup>2</sup>	928	1380	1380	185	814	1040	12	1170	1667	785
<b>C20-3 V</b>	20m <sup>2</sup>	928	1380	1380	185	814	1040	12	1170	1667	785
<b>C30-3 V</b>	30m <sup>2</sup>	1280	1380	1380	185	814	1040	12	1170	1667	785
<b>C40-3 V</b>	40m <sup>2</sup>	1240	2100	1920*	120	1675	1100	2	1780	2288	1210
<b>C50-3 V</b>	50m <sup>2</sup>	1240	2100	1920*	120	1675	1100	2	1780	2288	1210
<b>C60-3 V</b>	60m <sup>2</sup>	1240	2100	1920*	120	1675	1100	2	1780	2288	1210
<b>C75-3 V</b>	75m <sup>2</sup>	1240	2100	1920*	120	2200	1100	2	1780	2765	1210
<b>C90-3 V</b>	90m <sup>2</sup>	1240	2100	1920*	120	2200	1100	2	1780	2765	1210

\*Measurement from front of collector

<b>DUST CONTAINER</b>				
SIZE	Approx net weight	Typical dust densities		
		Dust	Density with 50% voidage, in kg/litre	
 <b>80 litre</b> (3 cu.ft.)	80 litre	6 kg	Sander	0.13
			Graphite	0.80
A reasonable total load for removal by hand would be 25 kg		Sand	1.33	
		Iron	3.58	
		Steel	3.72	

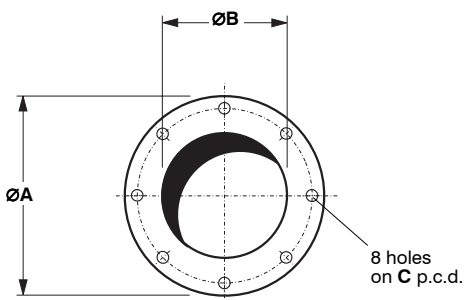
**Unicell Dust Collectors – Series C10-90**



**UNICELL VENTING TYPE DUST COLLECTOR WITH ROTARY VALVE**  
(C20 VR illustrated)

SPECIFICATIONS													
Type	Filtration area	DIMENSIONS in mm											
		A	B	c	d	e	f	g	h	i	j	k	l
<b>C10 VR</b>	10m <sup>2</sup>	928	1380	1380	185	814	1924	12	1170	2551	785	325	1200
<b>C20 VR</b>	20m <sup>2</sup>	928	1380	1380	185	814	1924	12	1170	2551	785	325	1200
<b>C30 VR</b>	30m <sup>2</sup>	1280	1380	1380	185	814	1924	12	1170	2551	785	325	1200
<b>C40 VR</b>	40m <sup>2</sup>	1240	2100	1920*	120	1675	2182	2	1780	3370	1210	380	1206
<b>C50 VR</b>	50m <sup>2</sup>	1240	2100	1920*	120	1675	2182	2	1780	3370	1210	380	1206
<b>C60 VR</b>	60m <sup>2</sup>	1240	2100	1920*	120	1675	2182	2	1780	3370	1210	380	1206
<b>C75 VR</b>	75m <sup>2</sup>	1240	2100	1920*	120	2200	2182	2	1780	3847	1210	380	1206
<b>C90 VR</b>	90m <sup>2</sup>	1240	2100	1920*	120	2200	2182	2	1780	3847	1210	380	1206

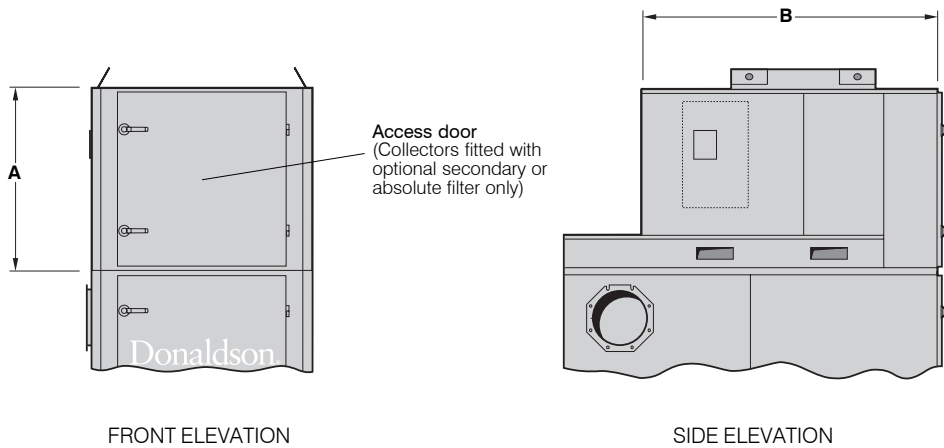
\*Measurement from front of collector



Type	DIMENSIONS in mm		
	A	B	C
<b>C10, C20 and C30</b>	340	200	280
<b>C40, C50, C60, C75 and C90</b>	395	250	350

**ROTARY VALVE OUTLET FLANGE DETAILS**  
(for rotary valve supplied by Donaldson)

All holes  $\varnothing$ 14mm for M12 bolts. Flange is 10mm thick



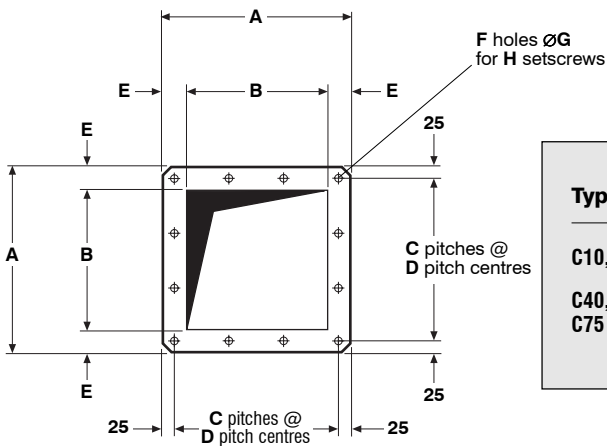
**UNICELL DUST COLLECTOR INCLUDING DETAILS FOR OPTIONAL SECONDARY OR ABSOLUTE FILTER**

(C50 K10 with secondary filter illustrated)  
All other dimensions are as indicated on pages 1 to 3, depending on the type of collector

**SPECIFICATIONS**

Type	Fan type (Refer to page 9 for fan availability)	DIMENSIONS in mm	
		A	B
<b>C10, C20 and C30</b>			
Unit only and unit with secondary or absolute filter	K3, K5, K7, G8, K10 or K11	764	1380
<b>C40, C50, C60, C75 and C90</b>			
Unit only	K10 or K11 K15, K18 or K21	1025 1225	1210 1620
Unit with secondary filter or absolute filter	K10* or K11* K15, K18 or K21	1025 1225	1690 2100

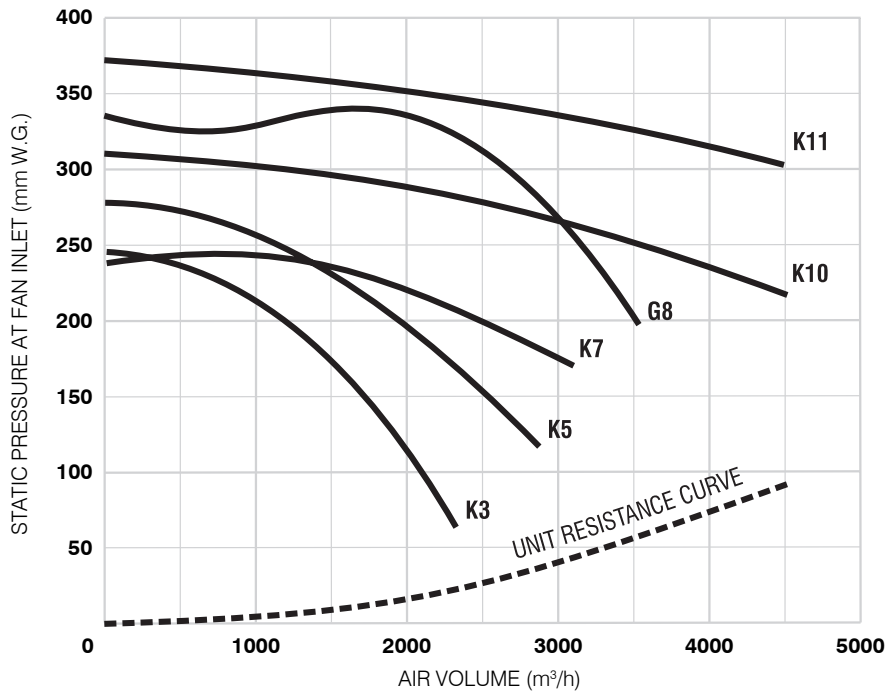
\*Secondary or absolute filters are not available for C60 collectors fitted with K10 type fan, or for C60, C75 and C90 collectors fitted with K11 type fan



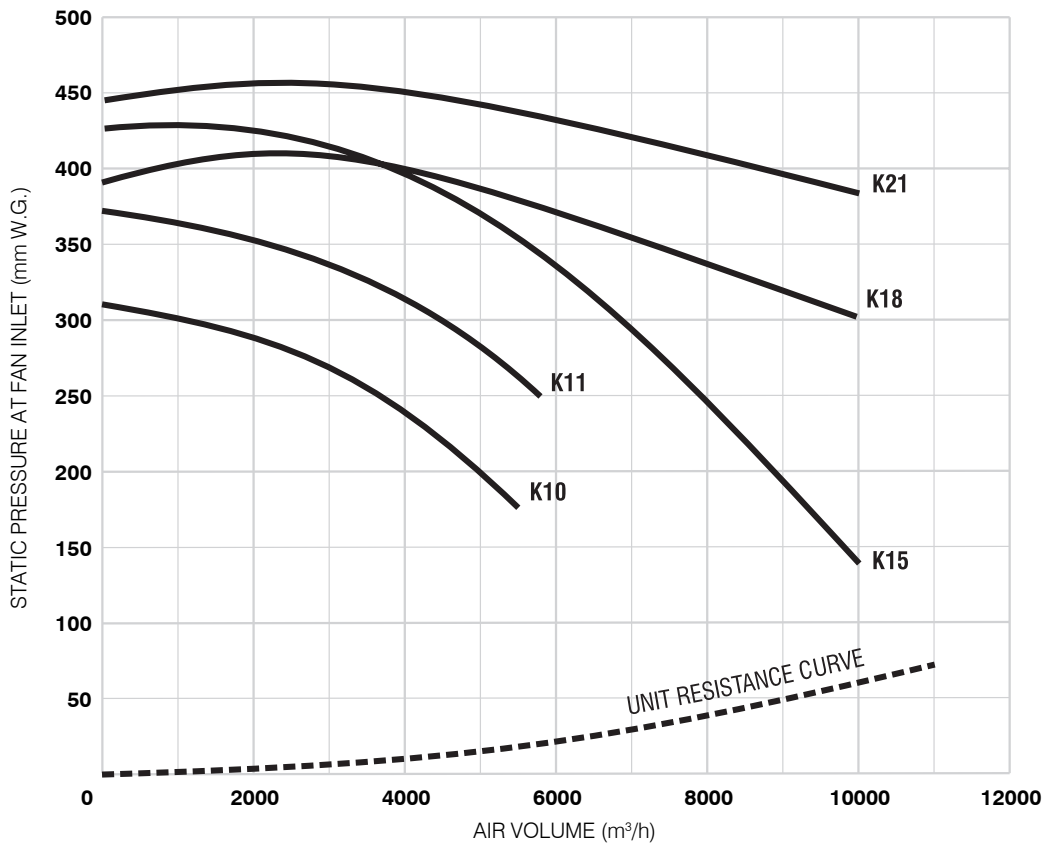
Type	A	B	C	D	E	F	G	H
<b>C10, C20 and C30</b>	320 mm	200 mm	3	90 mm	60 mm	12	12 mm	M10
<b>C40, C50, C60, C75 and C90</b>	352 mm	252 mm	2	151 mm	50 mm	8	14 mm	M12

**HOPPER OUTLET FLANGE DETAILS FOR ROTARY VALVE**

(C10-30 illustrated)



**C10, C20 and C30 dust collectors**



**C40, C50, C60, C75 and C90 dust collectors**

**FAN PERFORMANCE CURVES**



**FAN SELECTION**

These curves indicate static pressure available at fan inlet for a given volume when fitted inside a Unicell dust collector.

To select the most suitable fan for a given application:

- 1 Determine the air volume, in m<sup>3</sup>/h, needed to entrain the dust.
- 2 Read off the unit resistance, in mm W.G., at air volume required.
- 3 Estimate pressure drop through connected system – i.e. between point of entrainment and collector inlet.
- 4 Assess pressure drop over dust collector prior to cleaning, usually 50 to 125 mm W.G.
- 5 The sum of **2**, **3** and **4** = W.G. required.
- 6 Consult graph for fan performances available.

**FAN AVAILABILITY**

Fan type:	<b>K3</b>	<b>K5</b>	<b>K7</b>	<b>G8</b>	<b>K10</b>	<b>K11</b>	<b>K15</b>	<b>K18</b>	<b>K21</b>
Motor rating:	1.5 kW	2.2 kW	3.0 kW	5.5 kW	5.5 kW	7.5 kW	11.0 kW	15.0 kW	18.5 kW
<b>C10 and C20</b>	✓	✓	✓	✓	✗	✗	✗	✗	✗
<b>C30</b>	✓	✓	✓	✓	✓	✓	✗	✗	✗
<b>C40</b>	✗	✗	✗	✗	✓	✓	✓	✗	✗
<b>C50</b>	✗	✗	✗	✗	✓	✓	✓	✓	✗
<b>C60</b>	✗	✗	✗	✗	✓*	✓*	✓	✓	✗
<b>C75 and C90</b>	✗	✗	✗	✗	✗	✓*	✓	✓	✓

An acoustic diffuser is fitted as standard \* Not available with secondary or absolute filter

**NOISE LEVELS**

Machinery noise levels are an important consideration in the design and selection of new equipment. Several EC Directives and National Laws/Regulations adopting these directives make reference to airborne noise emissions. Actions that employers are required to comply with if employees are subjected to a daily personal noise exposure level of 85 dB(A) or more are also specified.

All Unicell dust collectors, when fitted with an acoustic diffuser, secondary filter or absolute filter, operating an 8 hour shift, are below this action limit.

**WEIGHTED SOUND PRESSURE LEVELS**

All readings were taken in normal industrial areas, i.e. semi-reverberant surroundings, with local equipment silent. Measurements were taken at maximum air flow conditions at 1.0 metre radius from the equipment housing and 1.6 metres above base level, using a precision sound level meter and octave filter.

Collectors tested were of standard configuration i.e. with acoustic diffuser

<b>K3</b>	<b>K5</b>	<b>K7</b>	<b>G8</b>	<b>K10</b>	<b>K11</b>	<b>K15</b>	<b>K18</b>	<b>K21</b>
66 dB(A)	72 dB(A)	73 dB(A)	75 dB(A)	74 dB(A)	76 dB(A)*	79 dB(A)	81 dB(A)	82 dB(A)

Noise levels of installed equipment may vary due to site conditions \*Measured data

**APPROXIMATE NET WEIGHTS**

**Unicell dust collector with dust container**

Type	Fan type	Unit only	Unit with secondary filter	Unit with absolute filter
<b>C10-3</b>	K3	548 kg	577 kg	579 kg
	K5	563 kg	592 kg	594 kg
	K7	588 kg	617 kg	619 kg
	G8	603 kg	632 kg	634 kg
<b>C20-3</b>	K3	559 kg	588 kg	590 kg
	K5	574 kg	603 kg	605 kg
	K7	599 kg	628 kg	630 kg
	G8	614 kg	643 kg	645 kg
<b>C30-3</b>	K3	653 kg	689 kg	700 kg
	K5	668 kg	704 kg	715 kg
	K7	693 kg	729 kg	740 kg
	G8	708 kg	744 kg	755 kg
	K10	723 kg	759 kg	770 kg
<b>C40-3</b>	K10	1124 kg	1198 kg	1247 kg
	K11	1184 kg	1258 kg	1307 kg
	K15	1279 kg	1363 kg	1413 kg
<b>C50-3</b>	K10	1134 kg	1208 kg	1257 kg
	K11	1194 kg	1268 kg	1317 kg
	K15	1289 kg	1373 kg	1423 kg
	K18	1314 kg	1398 kg	1448 kg
<b>C60-3</b>	K10	1144 kg	–	–
	K11	1204 kg	–	–
	K15	1299 kg	1395 kg	1431 kg
	K18	1324 kg	1420 kg	1456 kg
<b>C75-3</b>	K11	1389 kg	–	–
	K15	1484 kg	1580 kg	1616 kg
	K18	1509 kg	1605 kg	1641 kg
	K21	1614 kg	1710 kg	1746 kg
<b>C90-3</b>	K11	1404 kg	–	–
	K15	1499 kg	1595 kg	1631 kg
	K18	1524 kg	1620 kg	1656 kg
	K21	1629 kg	1725 kg	1761 kg

**Unicell dust collector with rotary valve**

Type	Fan type	Unit only	Unit with secondary filter	Unit with absolute filter
<b>C10 R</b>	K3	591 kg	620 kg	622 kg
	K5	606 kg	635 kg	637 kg
	K7	631 kg	660 kg	662 kg
	G8	646 kg	675 kg	677 kg
<b>C20 R</b>	K3	602 kg	631 kg	633 kg
	K5	617 kg	646 kg	648 kg
	K7	642 kg	671 kg	673 kg
	G8	657 kg	686 kg	688 kg
<b>C30 R</b>	K3	703 kg	739 kg	750 kg
	K5	718 kg	754 kg	765 kg
	K7	743 kg	779 kg	790 kg
	G8	758 kg	794 kg	805 kg
	K10	773 kg	809 kg	820 kg
<b>C40 R</b>	K10	1015 kg	1089 kg	1138 kg
	K11	1075 kg	1149 kg	1198 kg
	K15	1170 kg	1254 kg	1304 kg
<b>C50 R</b>	K10	1025 kg	1099 kg	1148 kg
	K11	1085 kg	1159 kg	1208 kg
	K15	1180 kg	1264 kg	1314 kg
	K18	1205 kg	1289 kg	1339 kg
<b>C60 R</b>	K10	1035 kg	–	–
	K11	1095 kg	–	–
	K15	1190 kg	1286 kg	1322 kg
	K18	1215 kg	1311 kg	1347 kg
<b>C75 R</b>	K11	1280 kg	–	–
	K15	1375 kg	1689 kg	1725 kg
	K18	1400 kg	1714 kg	1750 kg
	K21	1505 kg	1819 kg	1855 kg
<b>C90 R</b>	K11	1295 kg	–	–
	K15	1390 kg	1704 kg	1740 kg
	K18	1415 kg	1729 kg	1765 kg
	K21	1520 kg	1834 kg	1870 kg

All weights shown indicate heaviest configuration

**APPROXIMATE NET WEIGHTS**

**Unicell hopper type dust collector**

Type	Fan type	Unit only	Unit with secondary filter	Unit with absolute filter
<b>C10 H</b>	K3	418 kg	442 kg	444 kg
	K5	433 kg	457 kg	459 kg
	K7	458 kg	482 kg	484 kg
	G8	473 kg	497 kg	499 kg
<b>C20 H</b>	K3	429 kg	453 kg	455 kg
	K5	444 kg	468 kg	470 kg
	K7	469 kg	493 kg	495 kg
	G8	484 kg	508 kg	510 kg
<b>C30 H</b>	K3	513 kg	549 kg	560 kg
	K5	528 kg	564 kg	575 kg
	K7	553 kg	589 kg	600 kg
	G8	568 kg	604 kg	615 kg
	K10	583 kg	619 kg	630 kg
<b>C40 H</b>	K10	805 kg	879 kg	928 kg
	K11	865 kg	939 kg	988 kg
	K15	960 kg	1044 kg	1094 kg
<b>C50 H</b>	K10	815 kg	889 kg	938 kg
	K11	875 kg	949 kg	998 kg
	K15	970 kg	1054 kg	1104 kg
	K18	995 kg	1079 kg	1129 kg
<b>C60 H</b>	K10	825 kg	–	–
	K11	885 kg	–	–
	K15	980 kg	1076 kg	1112 kg
	K18	1005 kg	1101 kg	1137 kg
<b>C75 H</b>	K11	1070 kg	–	–
	K15	1165 kg	1479 kg	1515 kg
	K18	1190 kg	1504 kg	1540 kg
	K21	1295 kg	1609 kg	1645 kg
<b>C90 H</b>	K11	1085 kg	–	–
	K15	1180 kg	1494 kg	1530 kg
	K18	1205 kg	1519 kg	1555 kg
	K21	1310 kg	1624 kg	1660 kg

**Unicell venting type dust collector**

Type	Fan type	Unit only	Unit with secondary filter	Unit with absolute filter
<b>C10 V</b>	–	208 kg	–	–
<b>C20 V</b>	–	219 kg	–	–
<b>C30 V</b>	–	281 kg	–	–
<b>C40 V</b>	–	530 kg	–	–
<b>C50 V</b>	–	540 kg	–	–
<b>C60 V</b>	–	550 kg	–	–
<b>C75 V</b>	–	735 kg	–	–
<b>C90 V</b>	–	750 kg	–	–

**Unicell venting type dust collector with dust container**

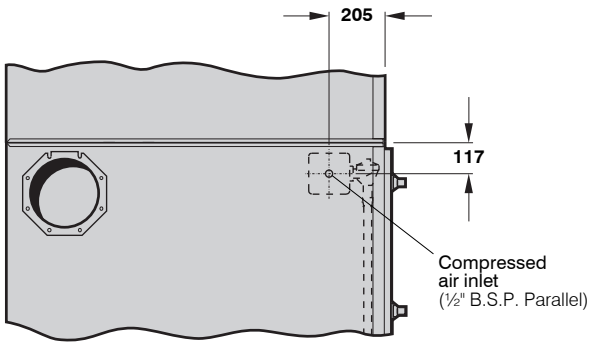
Type	Fan type	Unit only	Unit with secondary filter	Unit with absolute filter
<b>C10-3 V</b>	–	338 kg	–	–
<b>C20-3 V</b>	–	349 kg	–	–
<b>C30-3 V</b>	–	421 kg	–	–
<b>C40-3 V</b>	–	849 kg	–	–
<b>C50-3 V</b>	–	859 kg	–	–
<b>C60-3 V</b>	–	869 kg	–	–
<b>C75-3 V</b>	–	1054 kg	–	–
<b>C90-3 V</b>	–	1069 kg	–	–

**Unicell venting type dust collector with rotary valve**

Type	Fan type	Unit only	Unit with secondary filter	Unit with absolute filter
<b>C10 VR</b>	–	381 kg	–	–
<b>C20 VR</b>	–	392 kg	–	–
<b>C30 VR</b>	–	471 kg	–	–
<b>C40 VR</b>	–	740 kg	–	–
<b>C50 VR</b>	–	750 kg	–	–
<b>C60 VR</b>	–	760 kg	–	–
<b>C75 VR</b>	–	945 kg	–	–
<b>C90 VR</b>	–	960 kg	–	–

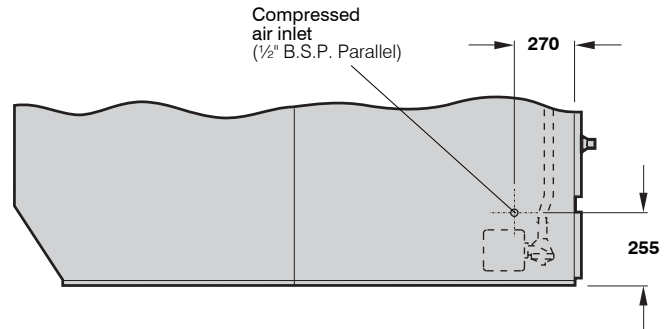
All weights shown indicate heaviest configuration

**Unicell Dust Collectors – Series C10-90**



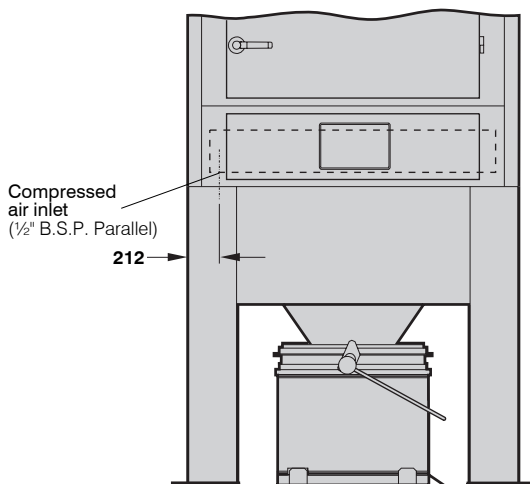
SIDE ELEVATION

**All C10-30 collectors**

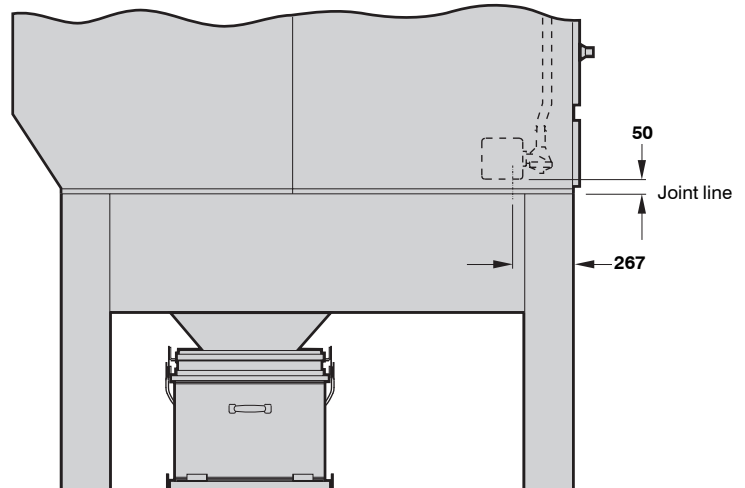


SIDE ELEVATION

**C40-90 hopper and venting type collectors and all C40-90 collectors supplied with PT controller or optional compressed air assembly**



FRONT ELEVATION



SIDE ELEVATION

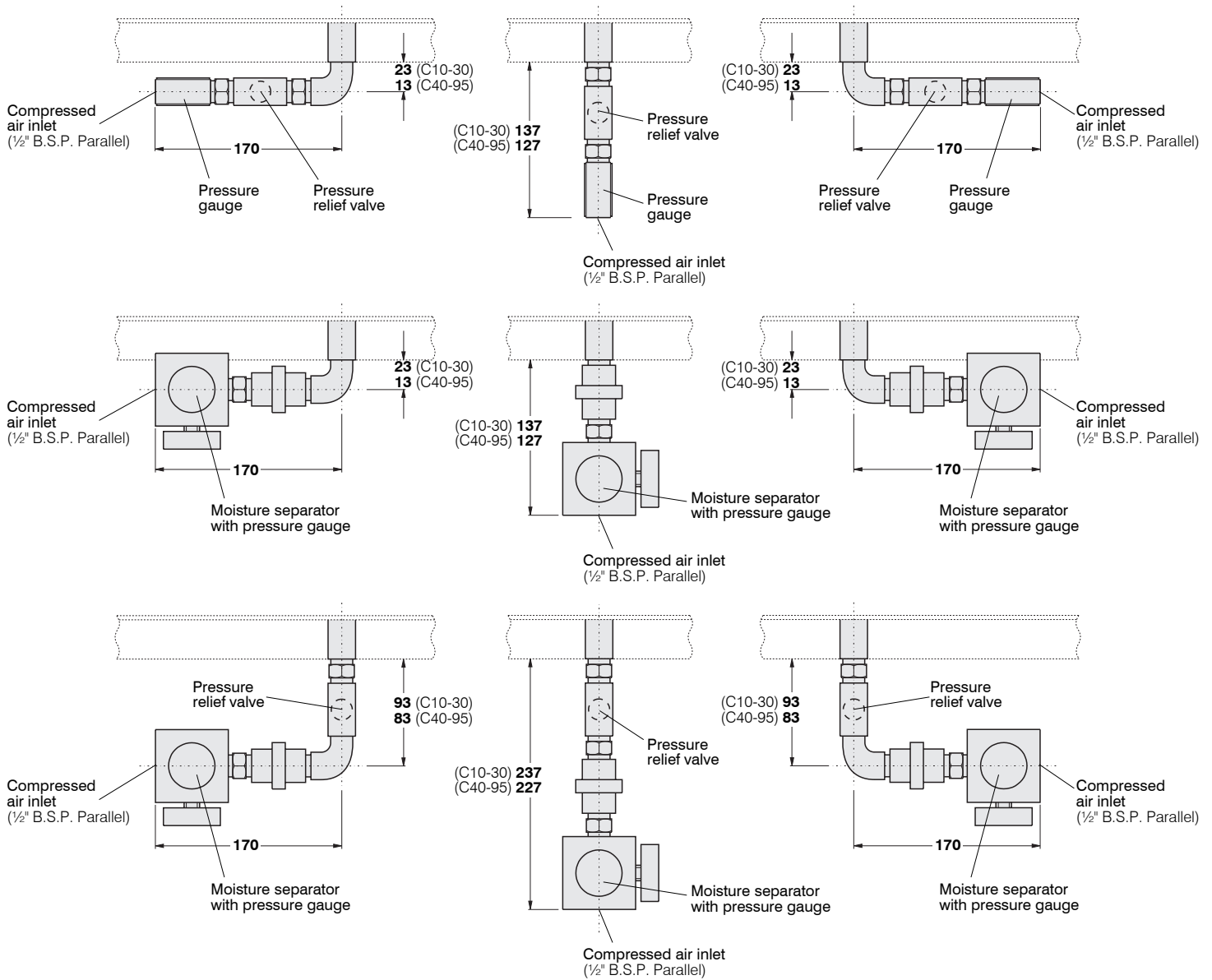
**C40-90 standard and venting type collectors with dust container or rotary valve\***

\*For C40-90 collectors supplied with PT controller or optional compressed air assembly, refer to illustration at top-right of page

**POSITION OF COMPRESSED AIR CONNECTION TO COLLECTOR**

<b>COMPRESSED AIR REQUIREMENTS</b>					
<b>Type</b>	<b>Working compressed air pressure <sup>a</sup></b>		<b>Atmospheric air volume – F.A.D. <sup>b</sup> at 12 sec. intervals <sup>c</sup></b>		<b>Pulse duration</b>
<b>C10</b>	3.7 bar	55 psig	7.3 m <sup>3</sup> /h	4.3 cfm	100 millisec.
<b>C20</b>	3.7 bar	55 psig	7.3 m <sup>3</sup> /h	4.3 cfm	100 millisec.
<b>C30</b>	3.7 bar	55 psig	9.6 m <sup>3</sup> /h	5.7 cfm	100 millisec.

<sup>a</sup> Normal operating pressure    <sup>b</sup> Recommended atmospheric air volume of clean, dry compressed air  
<sup>c</sup> Recommended initial settings; these may be varied with experience

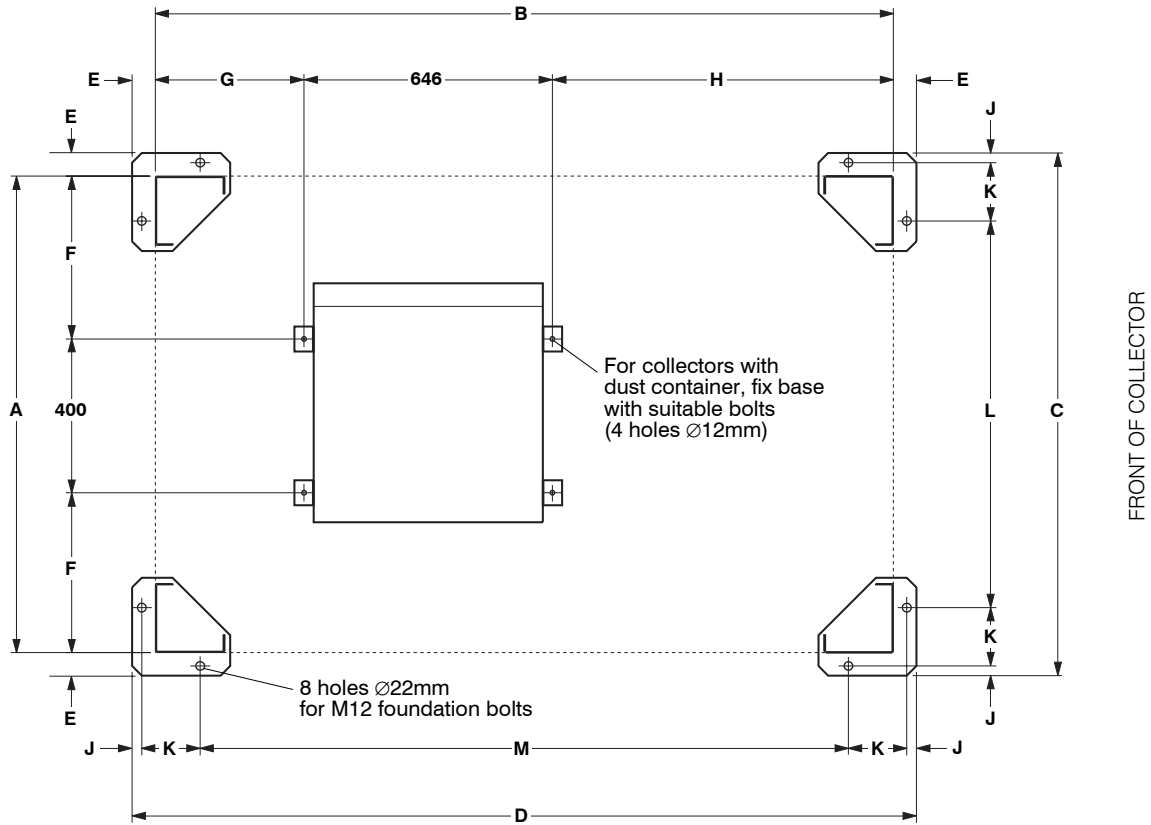


PLAN ELEVATIONS

**OPTIONAL COMPRESSED AIR ASSEMBLY DETAILS SHOWING ALTERNATIVE ARRANGEMENTS**

<b>COMPRESSED AIR REQUIREMENTS</b>					
<b>Type</b>	<b>Working compressed air pressure <sup>a</sup></b>		<b>Atmospheric air volume – F.A.D. <sup>b</sup> at 12 sec. intervals <sup>c</sup></b>		<b>Pulse duration</b>
<b>C40</b>	4.5 bar	65 psig	13.7 m <sup>3</sup> /h	8.1 cfm	100 millisec.
<b>C50</b>	4.5 bar	65 psig	13.7 m <sup>3</sup> /h	8.1 cfm	100 millisec.
<b>C60</b>	4.5 bar	65 psig	13.7 m <sup>3</sup> /h	8.1 cfm	100 millisec.
<b>C75</b>	5.2 bar	75 psig	15.6 m <sup>3</sup> /h	9.2 cfm	100 millisec.
<b>C90</b>	5.2 bar	75 psig	15.6 m <sup>3</sup> /h	9.2 cfm	100 millisec.

<sup>a</sup> Normal operating pressure    <sup>b</sup> Recommended atmospheric air volume of clean, dry compressed air  
<sup>c</sup> Recommended initial settings; these may be varied with experience

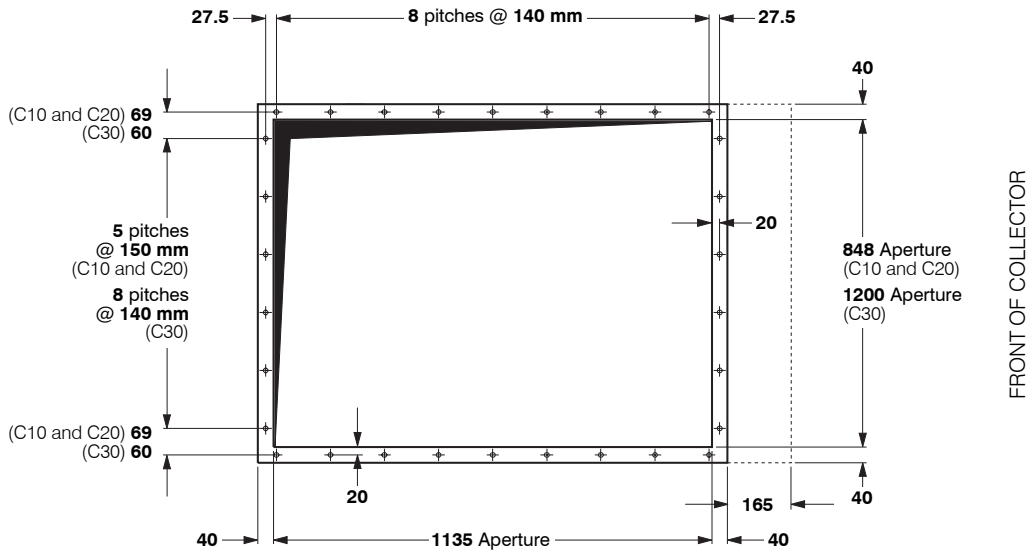


**FOUNDATION DETAILS FOR STANDARD AND VENTING TYPE COLLECTORS WITH DUST CONTAINER OR ROTARY VALVE**

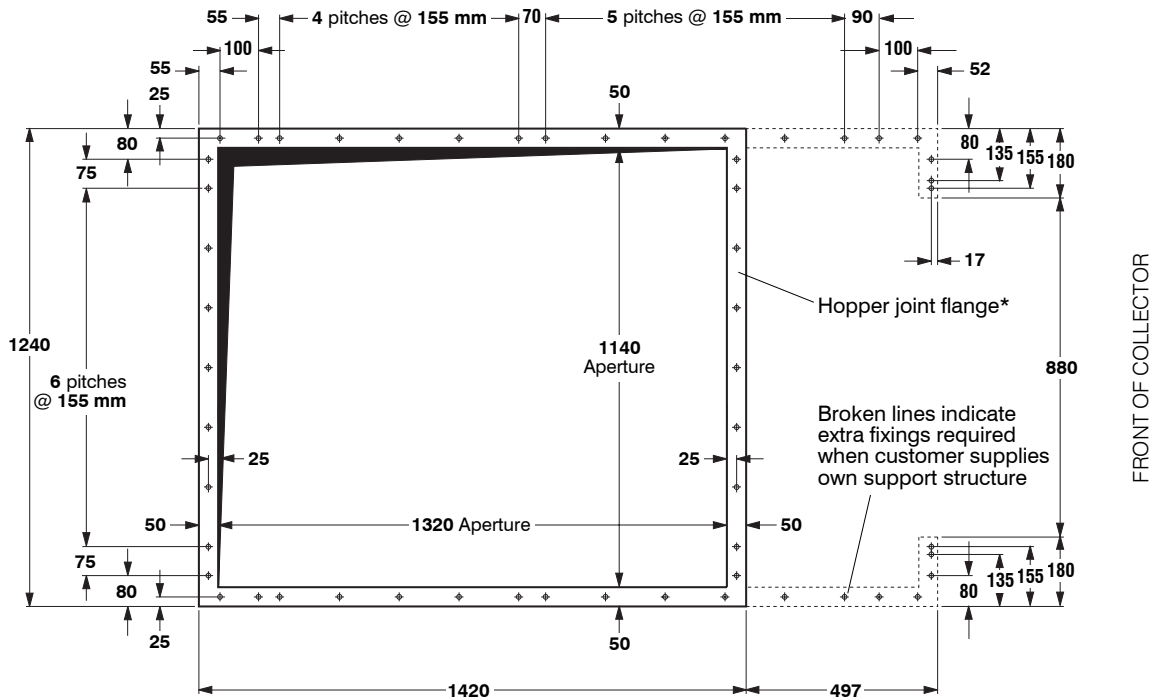
(C40-90 illustrated)

Type	DIMENSIONS in mm											
	A	B	C	D	E	F	G	H	J	K	L	M
<b>C10</b>	928	1380	1038	1490	55	264	272	462	20	157	684	1136
<b>C20</b>	928	1380	1038	1490	55	264	272	462	20	157	684	1136
<b>C30</b>	1280	1380	1390	1490	55	440	272	462	20	157	1036	1136
<b>C40</b>	1240	1920*	1360	2040	60	420	387	887	25	152	1006	1686
<b>C50</b>	1240	1920*	1360	2040	60	420	387	887	25	152	1006	1686
<b>C60</b>	1240	1920*	1360	2040	60	420	387	887	25	152	1006	1686
<b>C75</b>	1240	1920*	1360	2040	60	420	387	887	25	152	1006	1686
<b>C90</b>	1240	1920*	1360	2040	60	420	387	887	25	152	1006	1686

\*Measurement from front of collector



**C10, C20 and C30**  
(C10 and C20 illustrated)

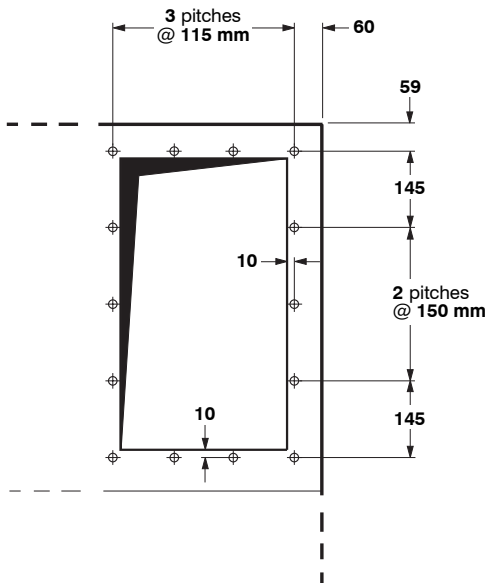


**C40, C50, C60, C75 and C90**

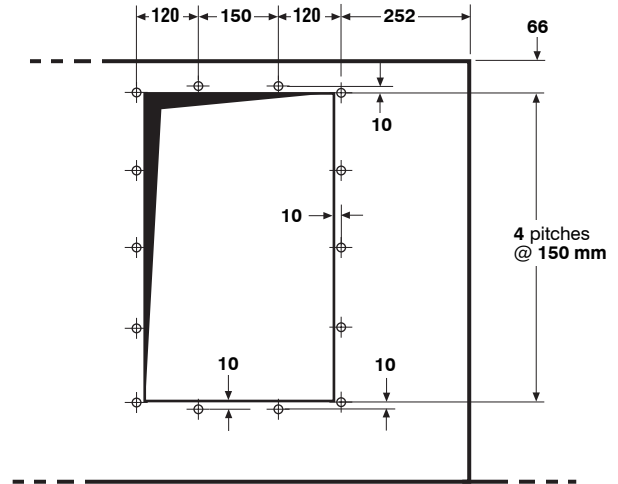
\*NOTE: Access will be required to the underside of the hopper joint flange, e.g. via customer upstand

**APERTURE AND MOUNTING FLANGE DETAILS FOR HOPPER AND VENTING TYPE COLLECTORS**

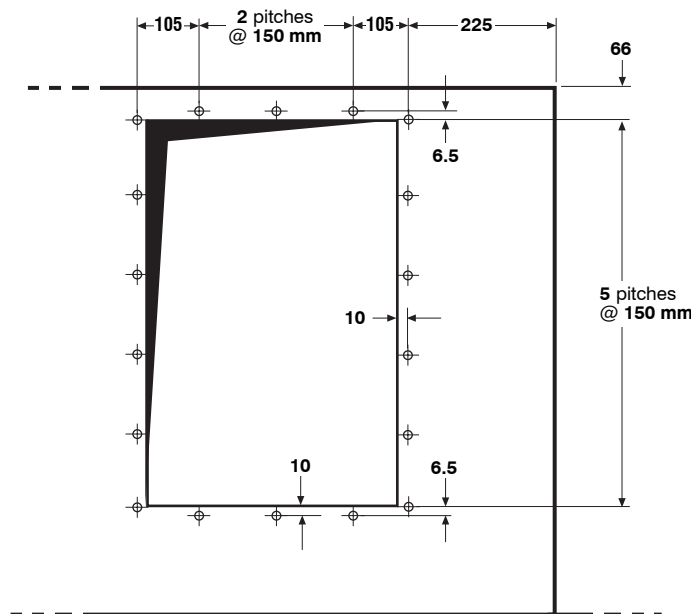
All holes  $\varnothing$ 12mm for M10 set screws



**C10, C20 and C30**



**C40, C50, C60, C75 and C90  
with K10 or K11 fans**

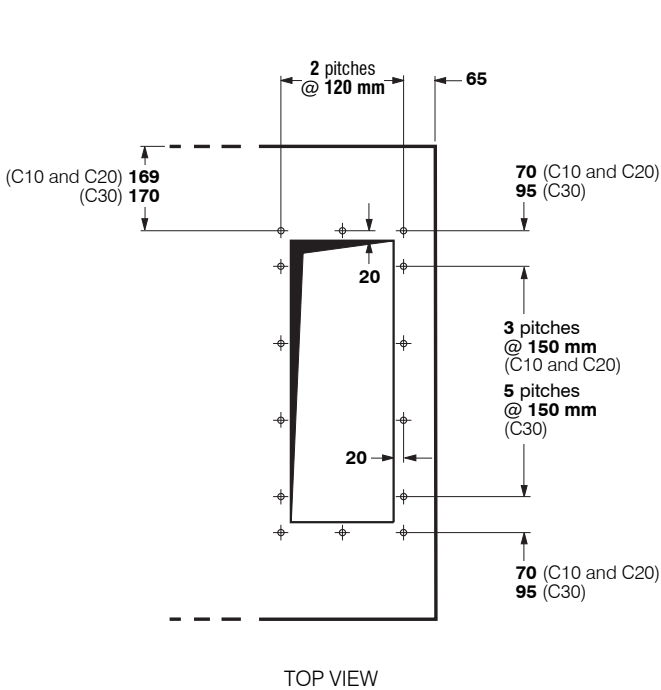


**C40, C50, C60, C75 and C90 with K15, K18 or K21 fans**

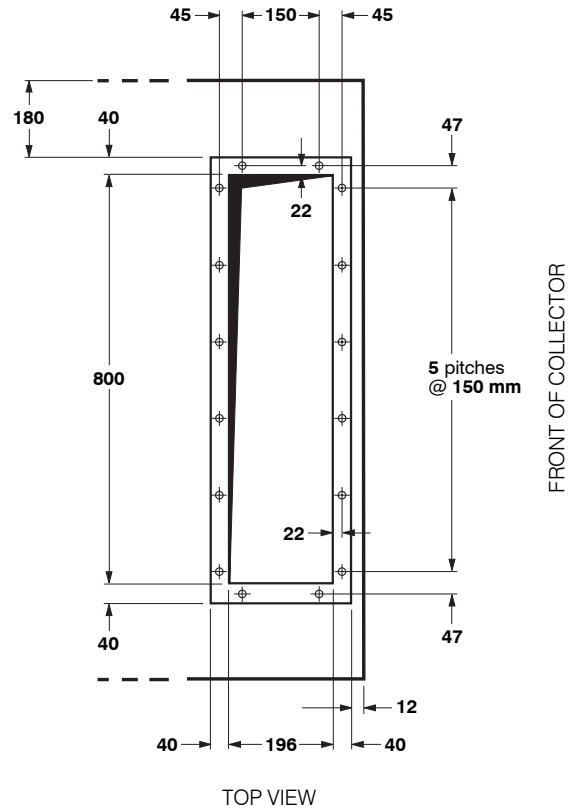
**CLEANED AIR OUTLET DETAILS FOR STANDARD AND HOPPER TYPE COLLECTORS  
(with outlet grille removed)**

All holes threaded for M6 set screws



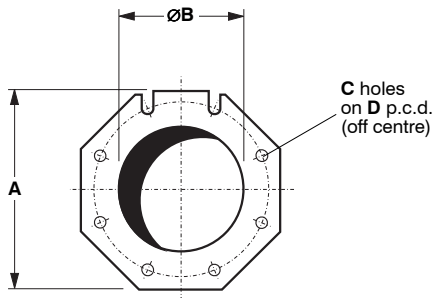


**C10, C20 and C30**  
(C10 and C20 illustrated)  
All holes  $\varnothing$ 10mm for M8 set screws



**C40, C50, C60, C75 and C90**  
Flange projects 48mm above top of collector  
All holes  $\varnothing$ 12mm for M10 set screws

**CLEANED AIR OUTLET DETAILS FOR VENTING TYPE COLLECTORS**

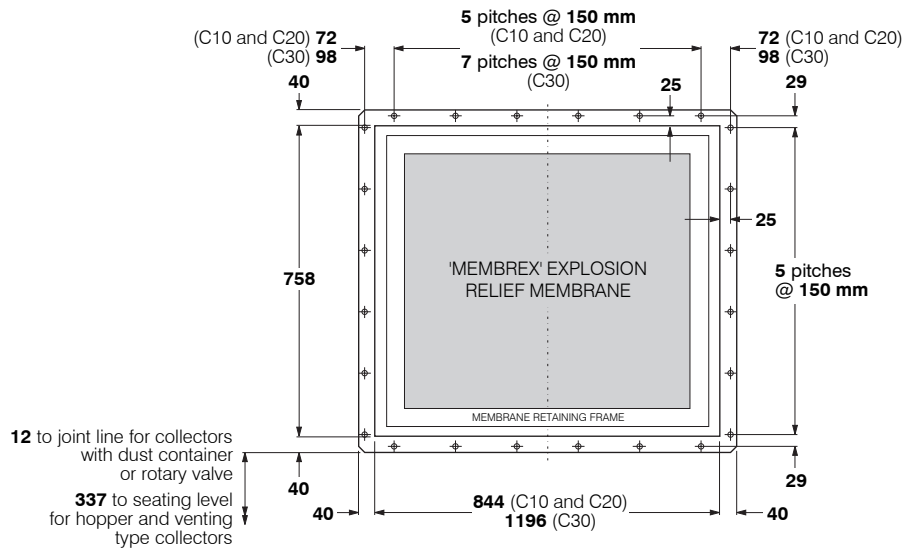


Type	A	B	C	D
<b>C10, C20 and C30</b>	307 mm	250 mm	8	292 mm
<b>C40, C50 and C60</b>	414 mm	355 mm	8	405 mm
<b>C75 and C90</b>	521 mm	450 mm	12	497 mm

p.c.d. to DIN 24154/2

**CONTAMINATED AIR INLET DETAILS**

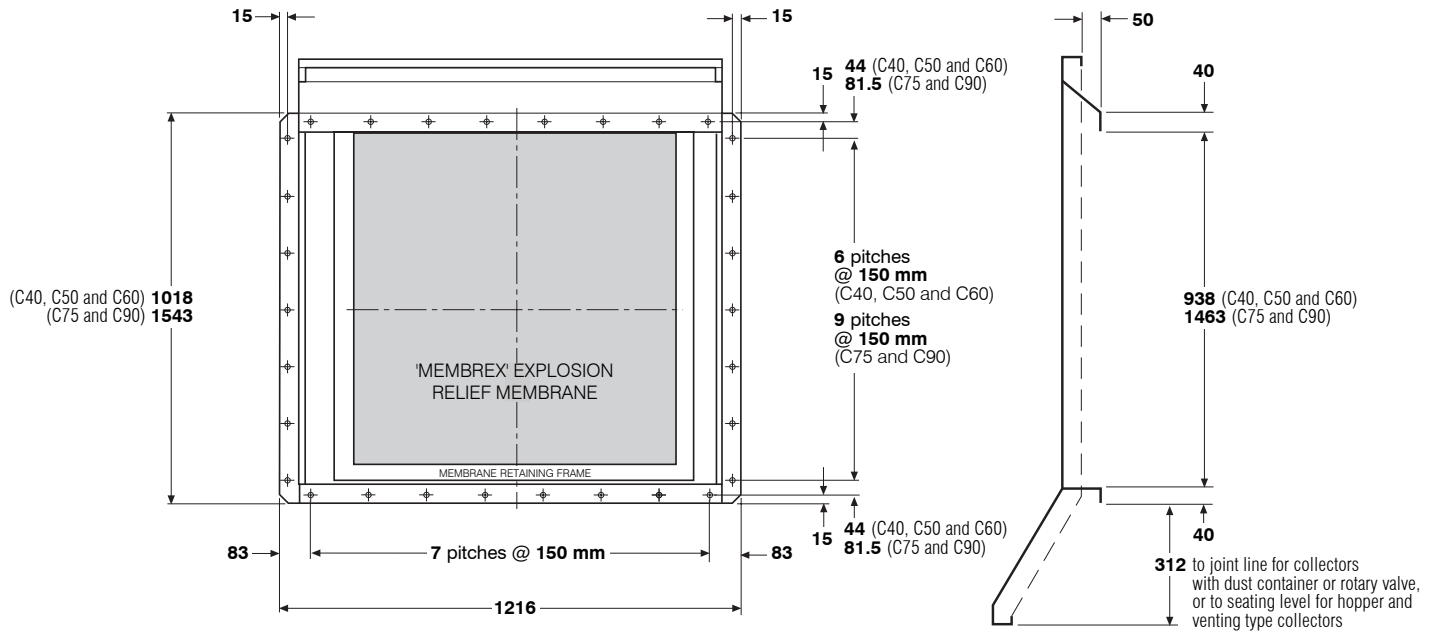
(C10-60 illustrated)  
All holes  $\varnothing$ 12mm for M10 bolts



**C10, C20 and C30**

(C10 and C20 illustrated)

Mounting flange projects 60mm beyond rear of collector  
All holes  $\varnothing$ 10mm for M8 set screws



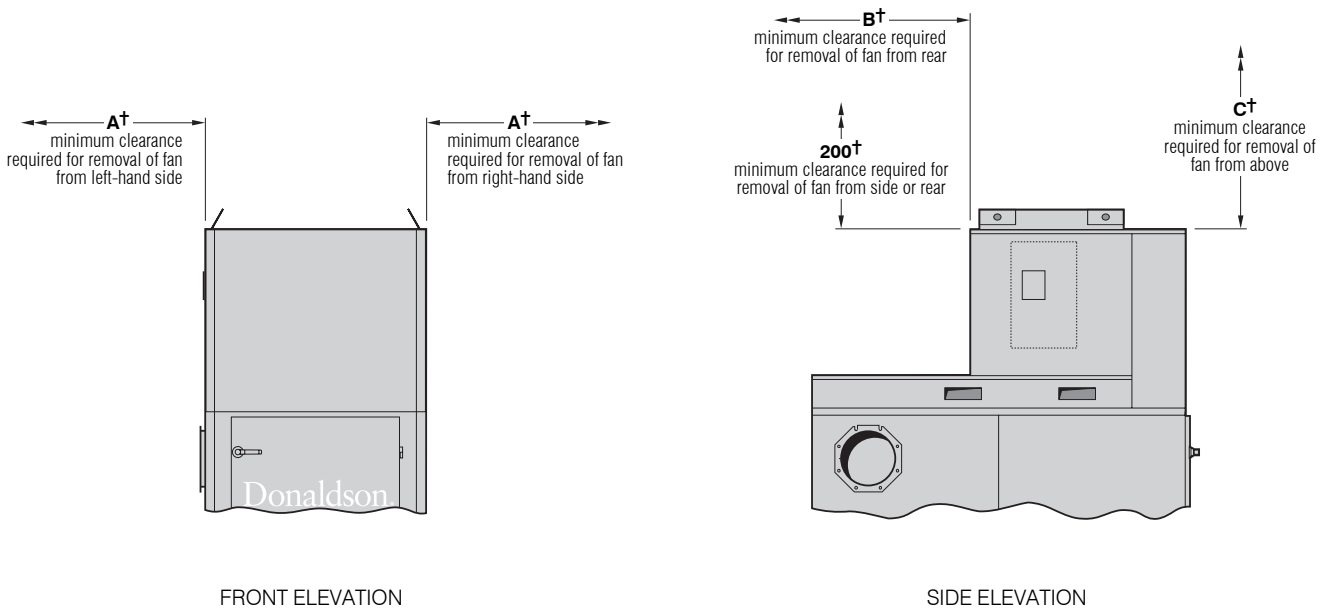
**C40, C50, C60, C75 and C90**

(C40, C50 and C60 illustrated)

All holes  $\varnothing$ 12mm for M10 set screws

FLANGE SECTION

**REAR EXPLOSION RELIEF FLANGE MOUNTING DETAILS**



**UNICELL FAN REMOVAL DETAILS**  
(C50 K10 illustrated)

Fan assembly type:	K3	K5	K7	G8	K10	K11	K15	K18	K21
Dimension A†:	590 mm	590 mm	565 mm	690 mm	695 mm	720 mm	910 mm	930 mm	930 mm
Dimension B†:	590 mm	590 mm	640 mm	655 mm	695 mm	725 mm	965 mm	1015 mm	1015 mm
Dimension C†:	700 mm	700 mm	700 mm	605 mm	780 mm	830 mm	1005 mm	1025 mm	1025 mm
Weight:	55 kg	70 kg	95 kg	110 kg	125 kg	185 kg	240 kg	265 kg	370 kg

† Measurements are for removal of fan assembly only and do not include clearances required for lifting equipment  
All weights shown indicate heaviest configuration



[www.donaldson.com](http://www.donaldson.com)

Humberstone Lane  
Thurmaston  
Leicester LE4 8HP  
England

Tel +44 (0)116 269 6161  
Fax +44 (0)116 269 3028

Email: [IFS-uk@emea.donaldson.com](mailto:IFS-uk@emea.donaldson.com)

Research Park Zone 1  
Interleuvenlaan 1  
B-3001 Leuven (Heverlee)  
Belgium

Tel +32 (0)16 383 970  
Fax +32 (0)16 383 938

Email: [IFS-europe@emea.donaldson.com](mailto:IFS-europe@emea.donaldson.com)